

# WORKSHOPS & WIZARDS

A deck of magical items to support facilitation  
and spark connection in any group setting.

## Print-at-Home Instructions

### You will need:

A4 size cardstock (200–300 gsm)

Scissors or a paper cutter

Glue stick

### Instructions:

1. Open the PDF containing your printable cards.
2. Set your printer to 100% scale (actual size) — don't fit to page.
3. Choose double-sided printing if your printer allows it, or print the fronts and backs separately, and then glue the front and back sheets.
4. Cut along the trim lines. Use a paper cutter for best results.



Workshops & Wizards is designed by James Smart.  
Testing and development by Deborah Rim Moiso.  
Visual design and illustrations by Laura Vidal.

This work is licensed under CC BY-NC-SA 4.0.  
To view a copy of this license, visit  
[creativecommons.org/licenses/by-nc-sa/4.0](https://creativecommons.org/licenses/by-nc-sa/4.0)



## Coffee Pot of the All-Seeing Eye



Attunes to the needs of the group or helps meet those needs.

LVL 2

## Gauntlets of Cosmic Order



Helps the group stay organized, support with tech/admin needs.

LVL 2

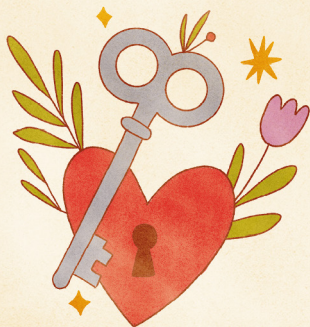
## Hive of Living Notes



Captures effective notes, provides meaningful summaries.

LVL 2

## Key of Breezy Openings



Welcomes newcomers, brings others up to speed, sets the stage.

LVL 2

## Lamp of Abundant Wishes (=>3)



Radiates kindness, warmth and generosity.

LVL 2

## Boots of Bravely Leaping



Embodies courage, vulnerability or leads by example.

LVL 2

## Tome of Real Legends



Recognizes the efforts of others, shares insights and real-world examples.

LVL 2

## Amulet of Yes, And...



Encourages the group and builds on the ideas of others.

LVL 2

?

LVL 2



